

Wisconsin Livestock Operations

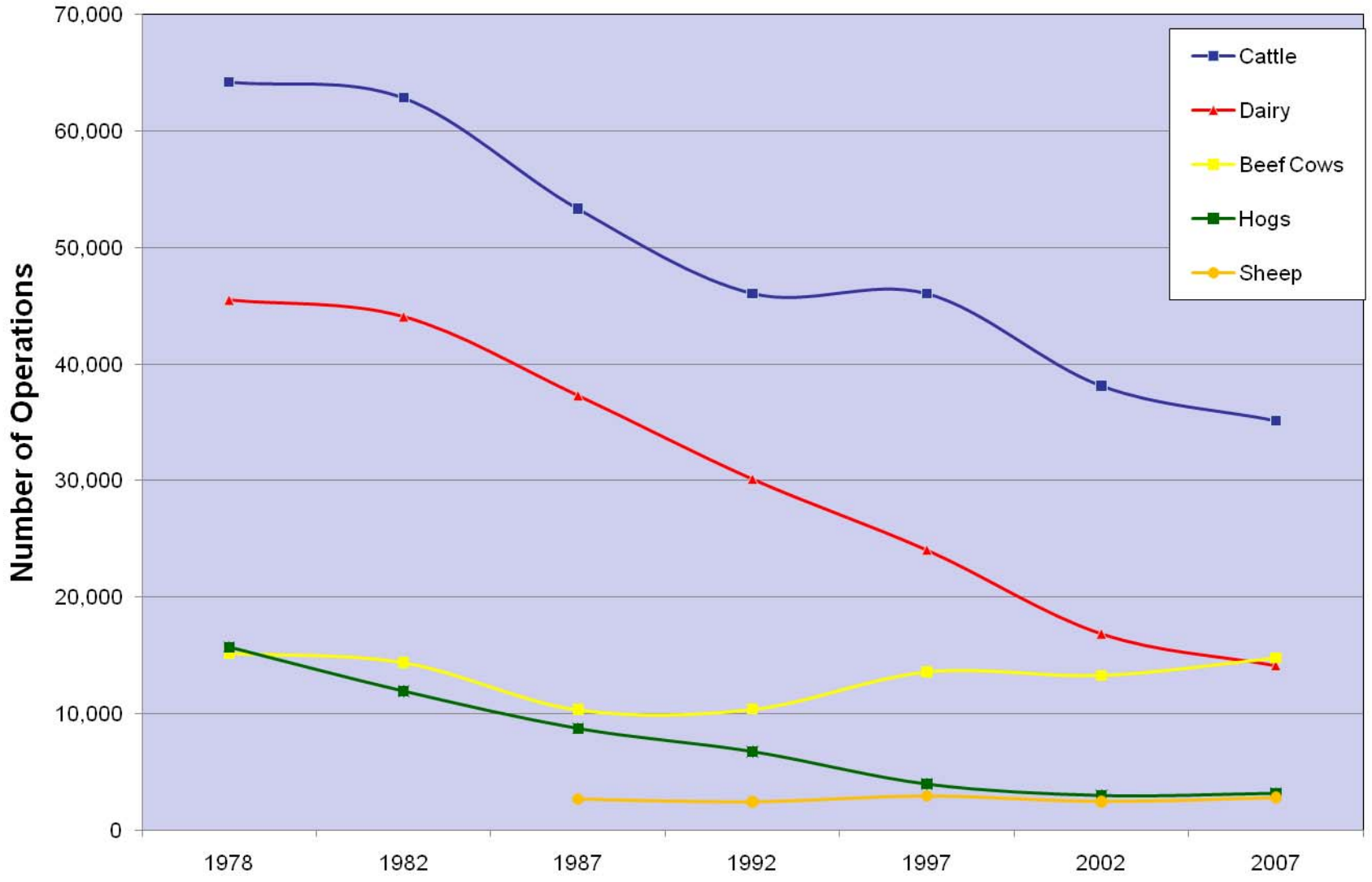
From the Census Of Agriculture



Year	Cattle	Dairy	Beef cows	Hogs	Sheep
1978	64,192	45,518	15,185	15,713	
1982	62,836	44,093	14,386	11,940	
1987	53,315	37,325	10,355	8,737	2,684
1992	46,052	30,156	10,394	6,760	2,444
1997	46,036	24,065	13,594	3,974	2,965
2002	38,120	16,886	13,300	2,993	2,472
2007	35,125	14,158	14,775	3,188	2,816

Wisconsin Livestock Operations

From the Census Of Agriculture



Total Cattle Inventory

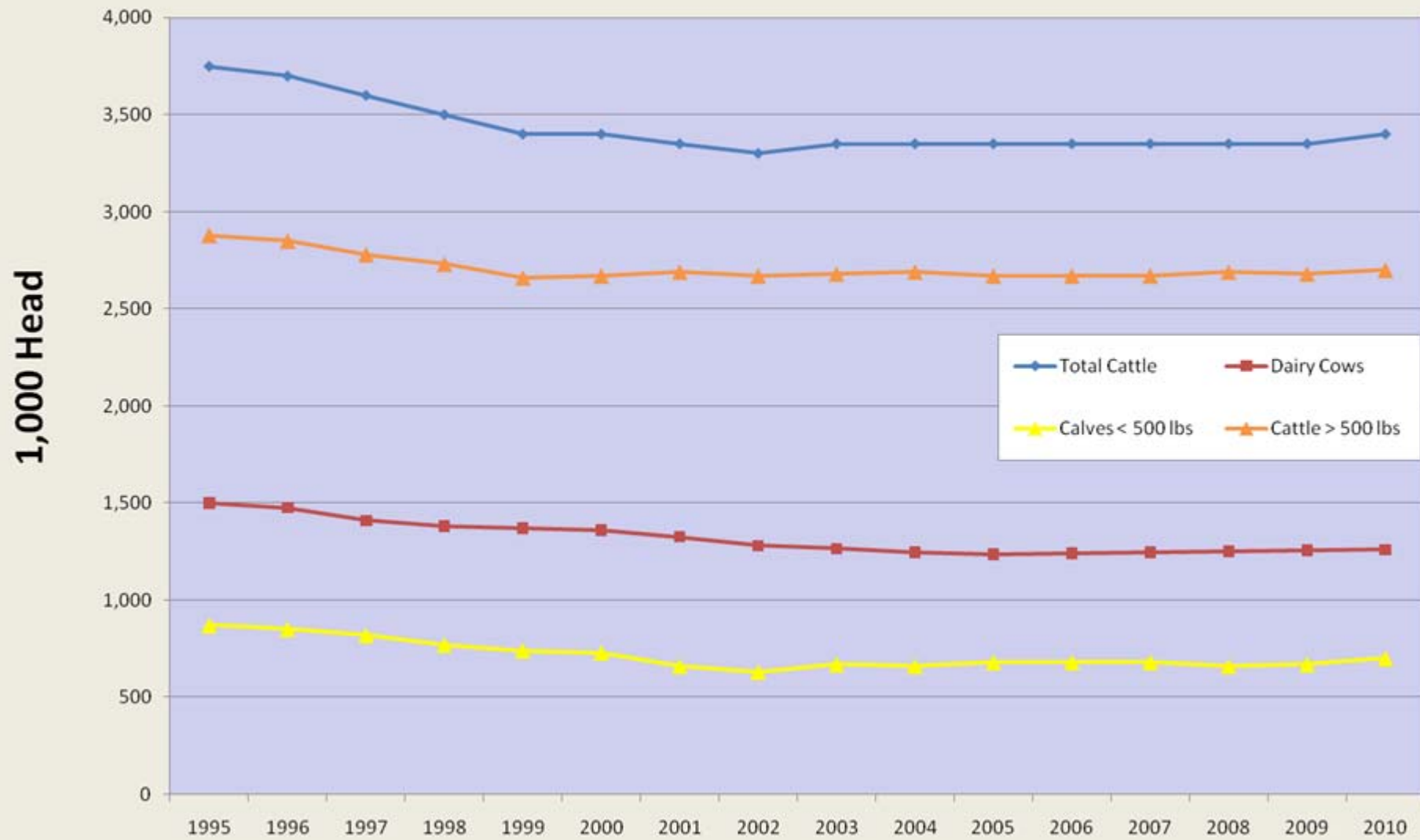
(As of January 1st)



Year	Number of Head	Value per Head	Total Value
1995	3,750,000	760	2,850,000
1996	3,700,000	690	2,622,000
1997	3,600,000	710	2,556,000
1998	3,500,000	720	2,520,000
1999	3,400,000	830	2,822,000
2000	3,400,000	930	3,162,000
2001	3,350,000	900	3,015,000
2002	3,300,000	1080	3,564,000
2003	3,350,000	1010	3,383,500
2004	3,350,000	1060	3,551,000
2005	3,350,000	1190	3,986,500
2006	3,350,000	1330	4,455,500
2007	3,350,000	1230	4,120,500
2008	3,350,000	1420	4,757,000
2009	3,350,000	1260	4,221,000
2010	3,400,000	1040	3,536,000

Cattle Inventory

(As of January 1st)



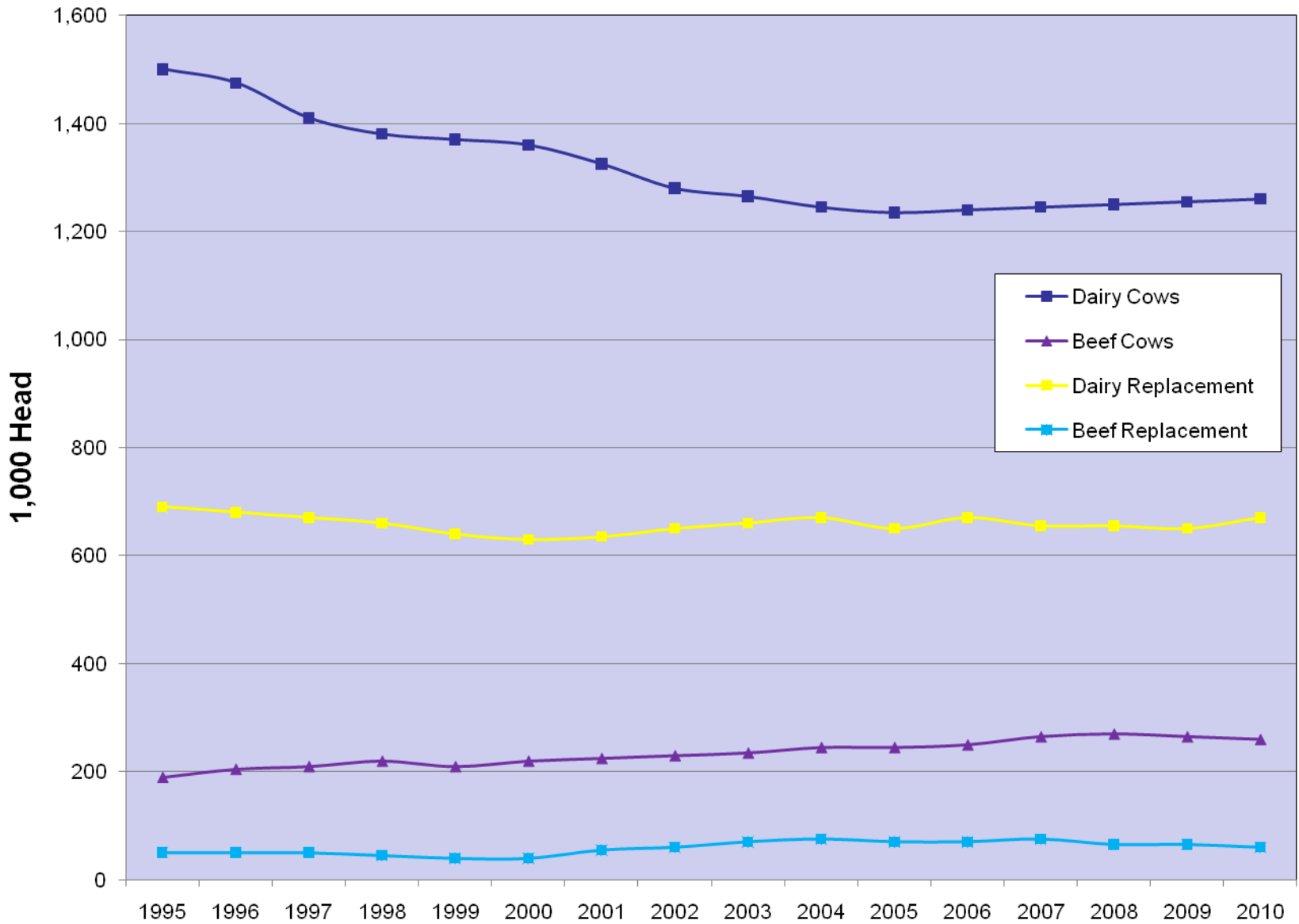
Total Cow Inventory

(As of January 1st)

Year	Cows		Replacement Heifers	
	Dairy	Beef	Dairy	Beef
	1,000 Head		1,000 Head	
1995	1,500	190	690	50
1996	1,475	205	680	50
1997	1,410	210	670	50
1998	1,380	220	660	45
1999	1,370	210	640	40
2000	1,360	220	630	40
2001	1,325	225	635	55
2002	1,280	230	650	60
2003	1,265	235	660	70
2004	1,245	245	670	75
2005	1,235	245	650	70
2006	1,240	250	670	70
2007	1,245	265	655	75
2008	1,250	270	655	65
2009	1,255	265	650	65
2010	1,260	260	670	60

Total Cow Inventory

(As of January 1st)



Total Calf Inventory

(Jan. 1 – Dec. 31)

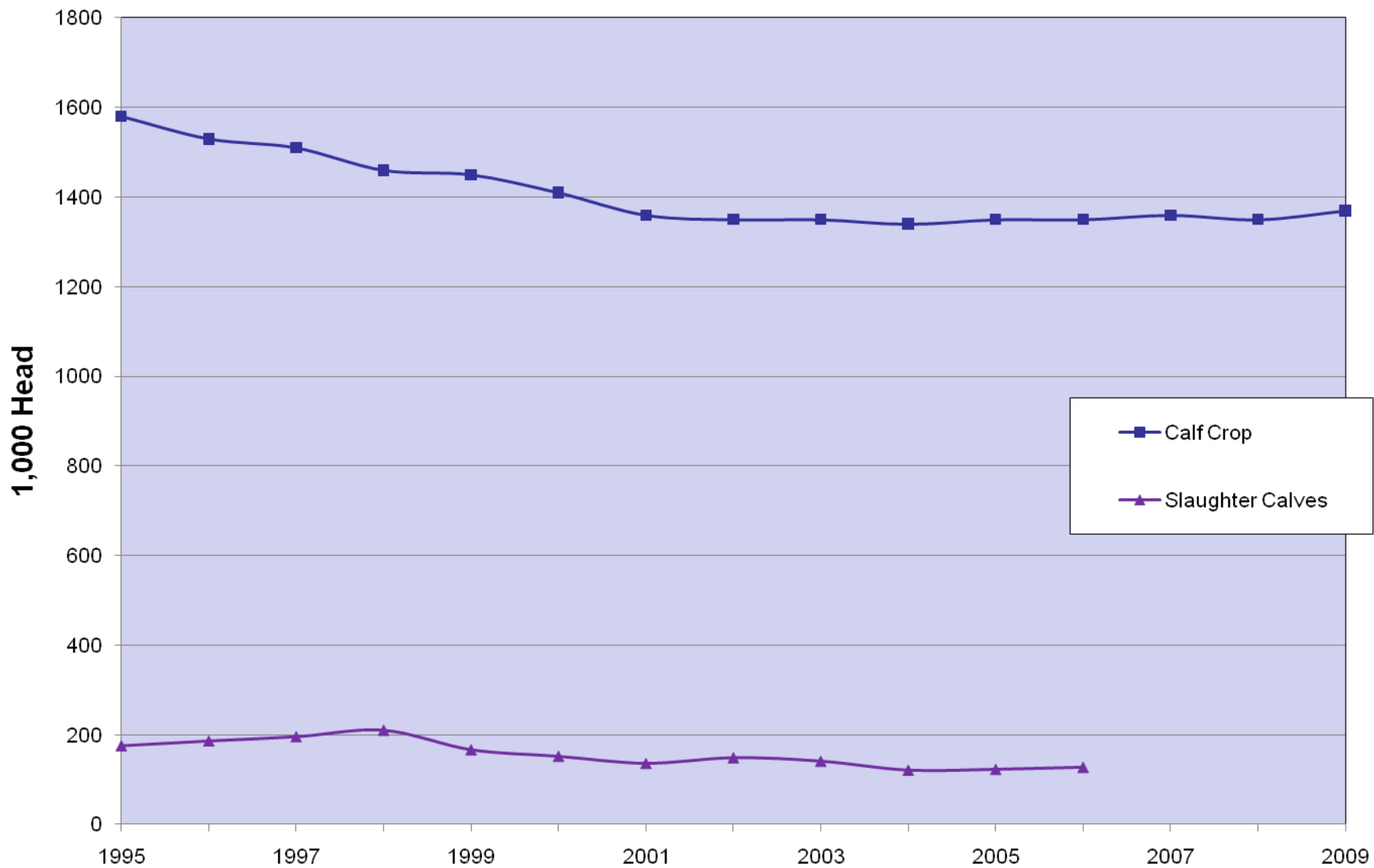


Year	Calf Crop	Slaughter Calves
	(1,000 Head)	
1995	1580	175.5
1996	1530	186.4
1997	1510	196.0
1998	1460	210.7
1999	1450	166.4
2000	1410	151.6
2001	1360	135.7
2002	1350	148.3
2003	1350	140.6
2004	1340	120.2
2005	1350	122.0
2006	1350	126.9
2007	1360	n.a.
2008	1350	n.a.
2009	1370	n.a.

n.a. Not published to avoid disclosure

Calf Crop

(Jan. 1 - Dec. 31)



Total Hog Inventory

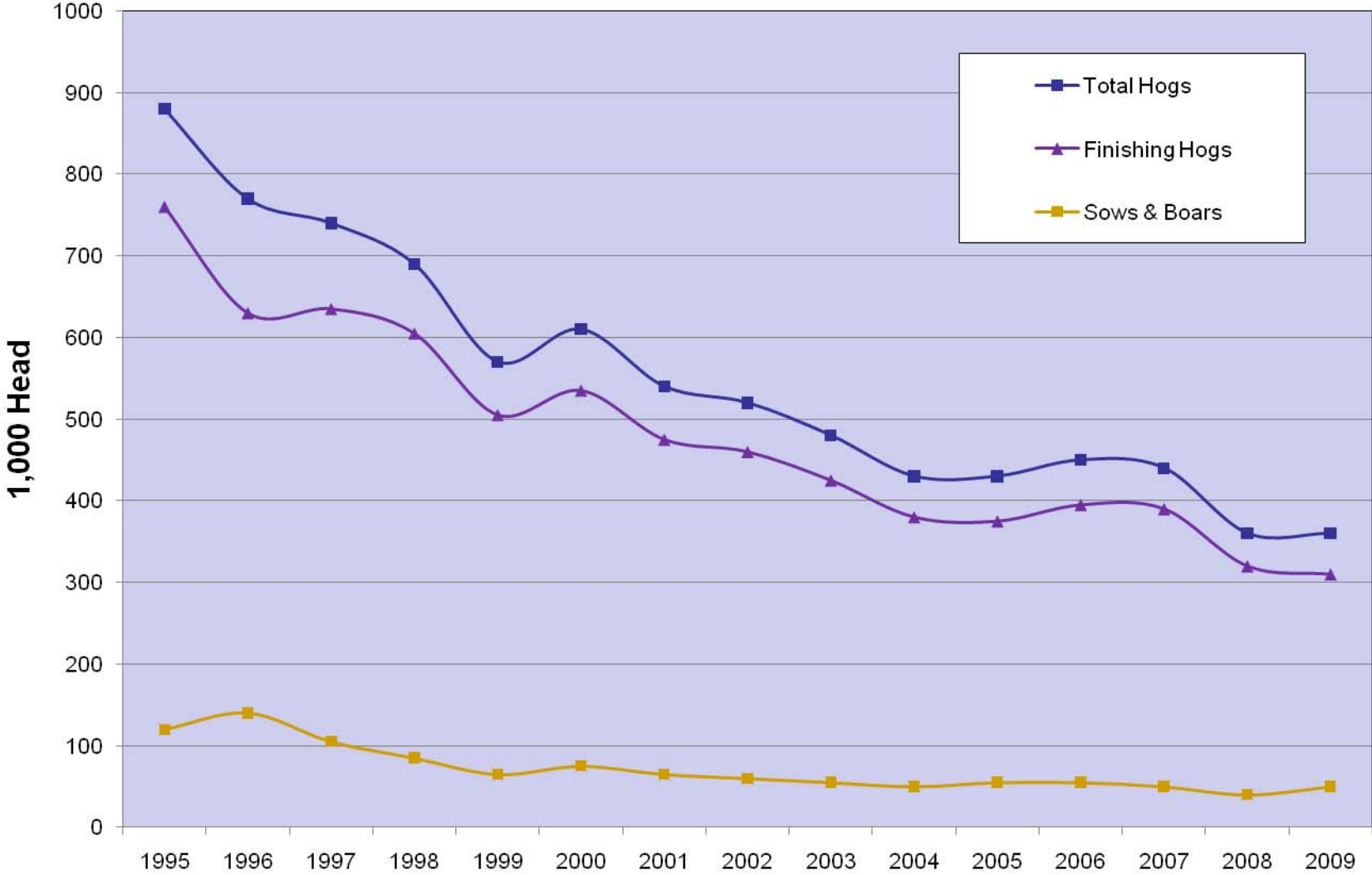
(As of December 31st)



Year	Total Hogs	Finishing Hogs	Sows & Boars	Value per Head
	1,000 Head			
1995	880	760	120	74
1996	770	630	140	95
1997	740	635	105	84
1998	690	605	85	40
1999	570	505	65	64
2000	610	535	75	70
2001	540	475	65	70
2002	520	460	60	69
2003	480	425	55	65
2004	430	380	50	91
2005	430	375	55	87
2006	450	395	55	83
2007	440	390	50	68
2008	360	320	40	78
2009	360	310	50	79

Hog Inventory

(As of December 31st)



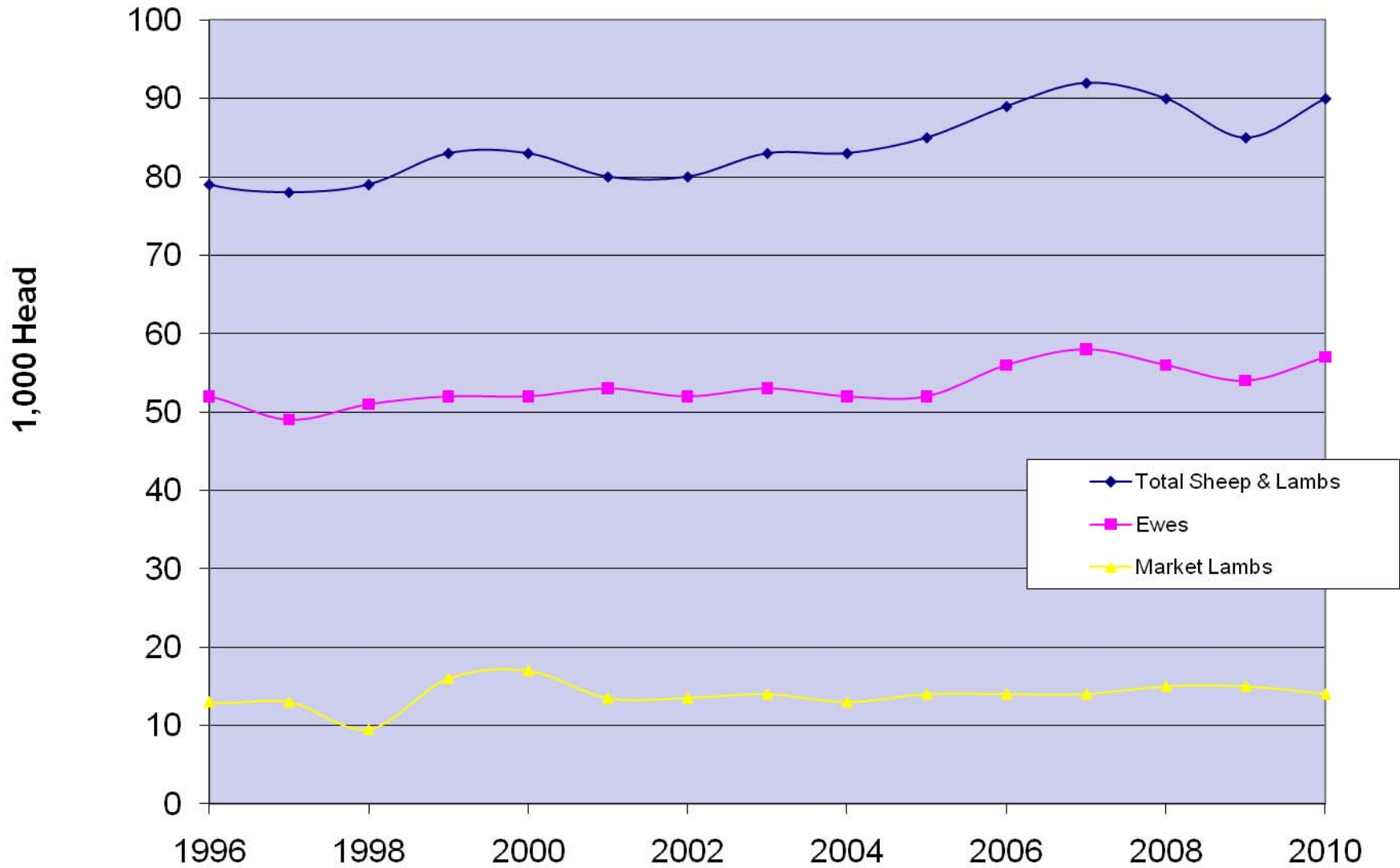
Total Sheep & Lamb Inventory

(As of January 1st)

Year	Total Sheep & Lambs	Ewes	Market Lambs
	Number of Head		
1995	83,000	53,000	16,000
1996	79,000	52,000	13,500
1997	78,000	49,000	13,000
1998	79,000	51,000	9,500
1999	83,000	52,000	16,000
2000	83,000	52,000	17,000
2001	80,000	53,000	13,500
2002	80,000	52,000	13,500
2003	83,000	53,000	14,000
2004	83,000	52,000	13,000
2005	85,000	52,000	14,000
2006	89,000	56,000	14,000
2007	92,000	58,000	14,000
2008	90,000	56,000	15,000
2009	85,000	54,000	15,000
2010	90,000	57,000	14,000



Sheep & Lamb Inventory (As of January 1st)



Total Goat Inventory

(As of January 1st)

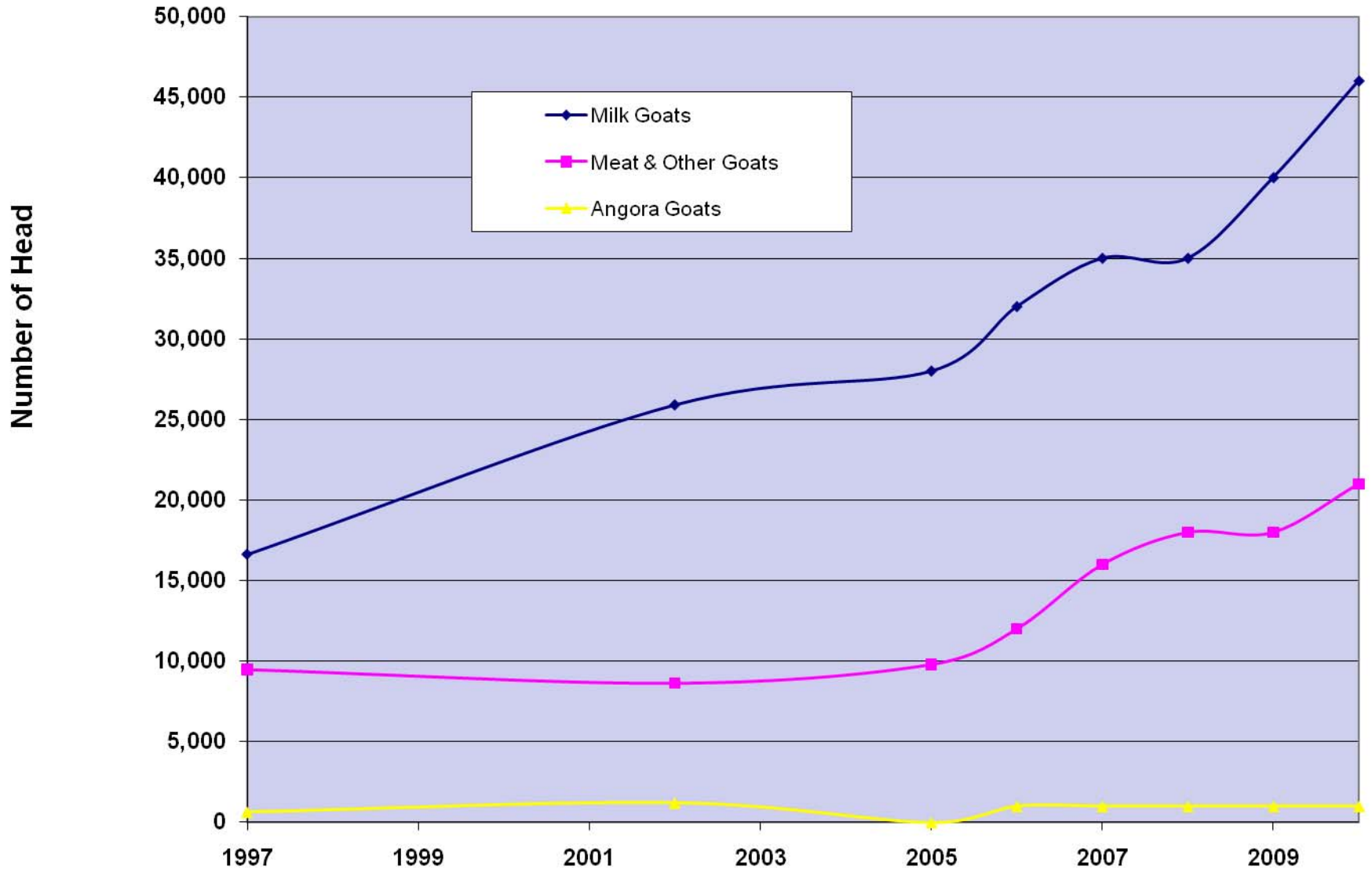


Year	Milk Goats	Meat & Other Goats	Angora Goats
	Number of head		
1997*	16,629	9,484	645
2002*	25,900	8,634	1,206
2005	28,000	9,800	n.a.
2006	32,000	12,000	1,000
2007	35,000	16,000	1,000
2008	35,000	18,000	1,000
2009	40,000	18,000	1,000
2010	46,000	21,000	1,000

*Census Data

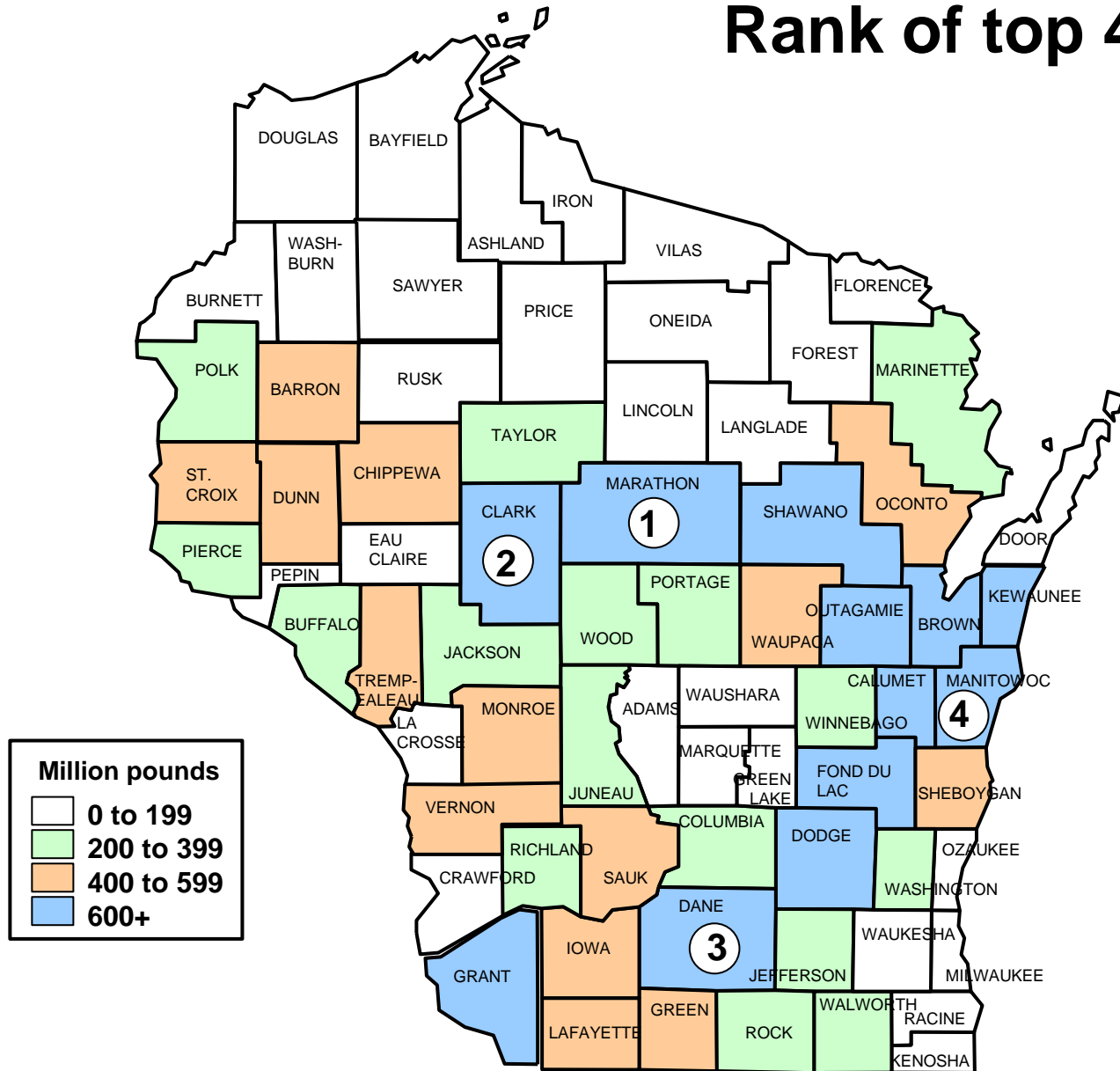
Goat Inventory

(As of January 1st)



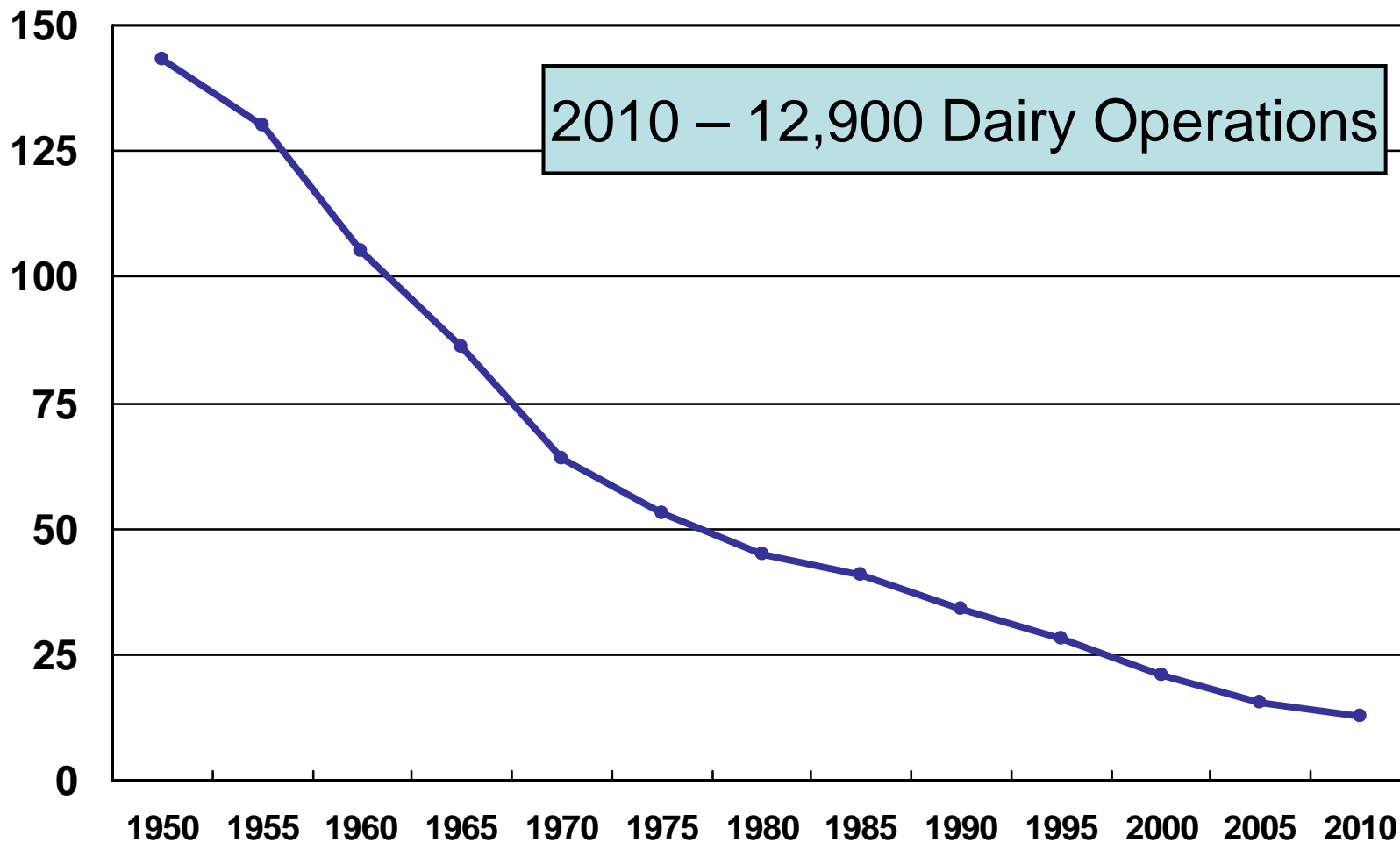
Wisconsin Milk Production by County – 2008

Rank of top 4 Counties



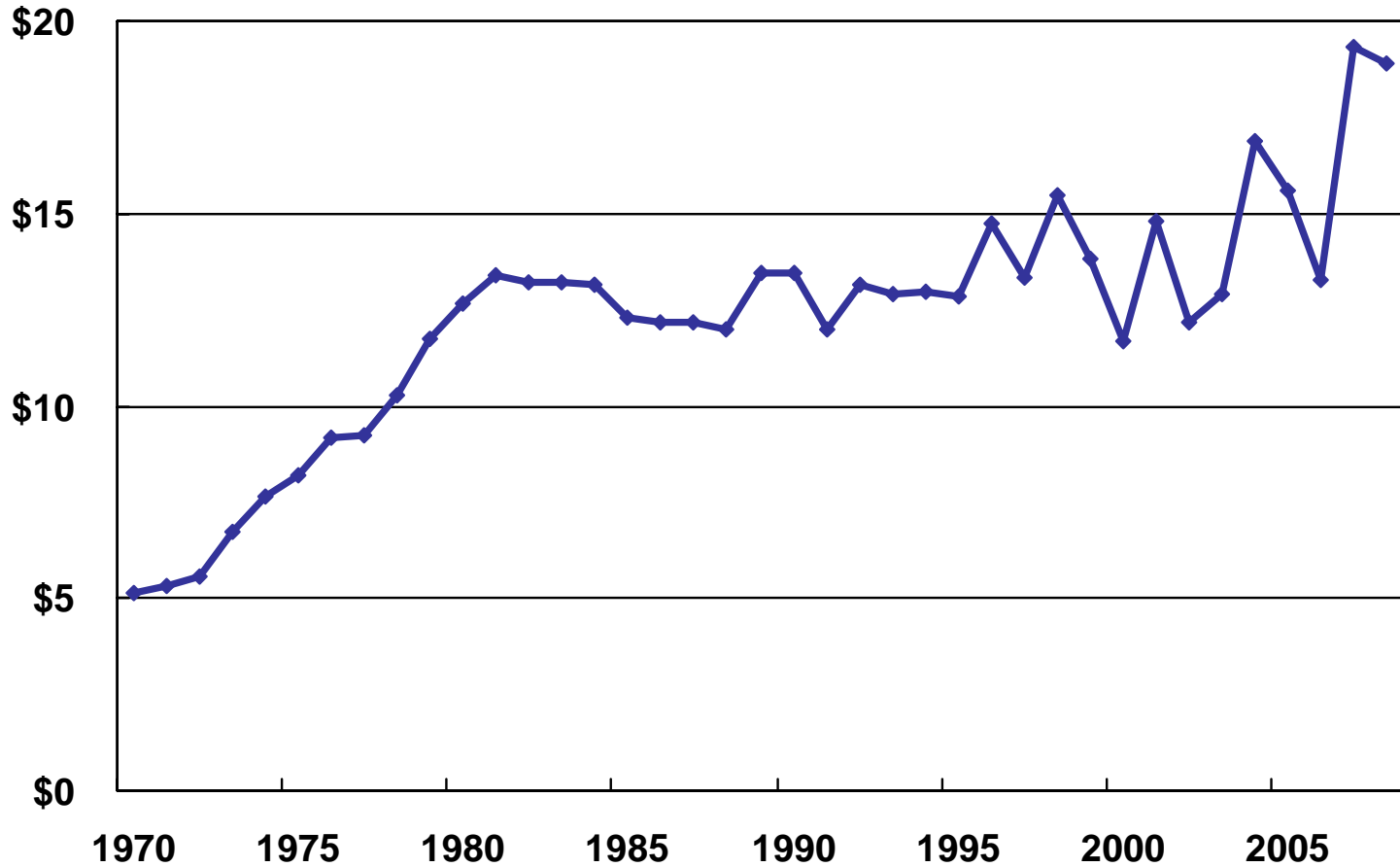
Number of Dairy Operations Wisconsin, 1950 - 2010

Thousands



All Milk Price Received by Farmers Wisconsin, 1970 - 2008

\$ per cwt.



Number of Dairy Operations by Herd Size Wisconsin, 1985 & 2007

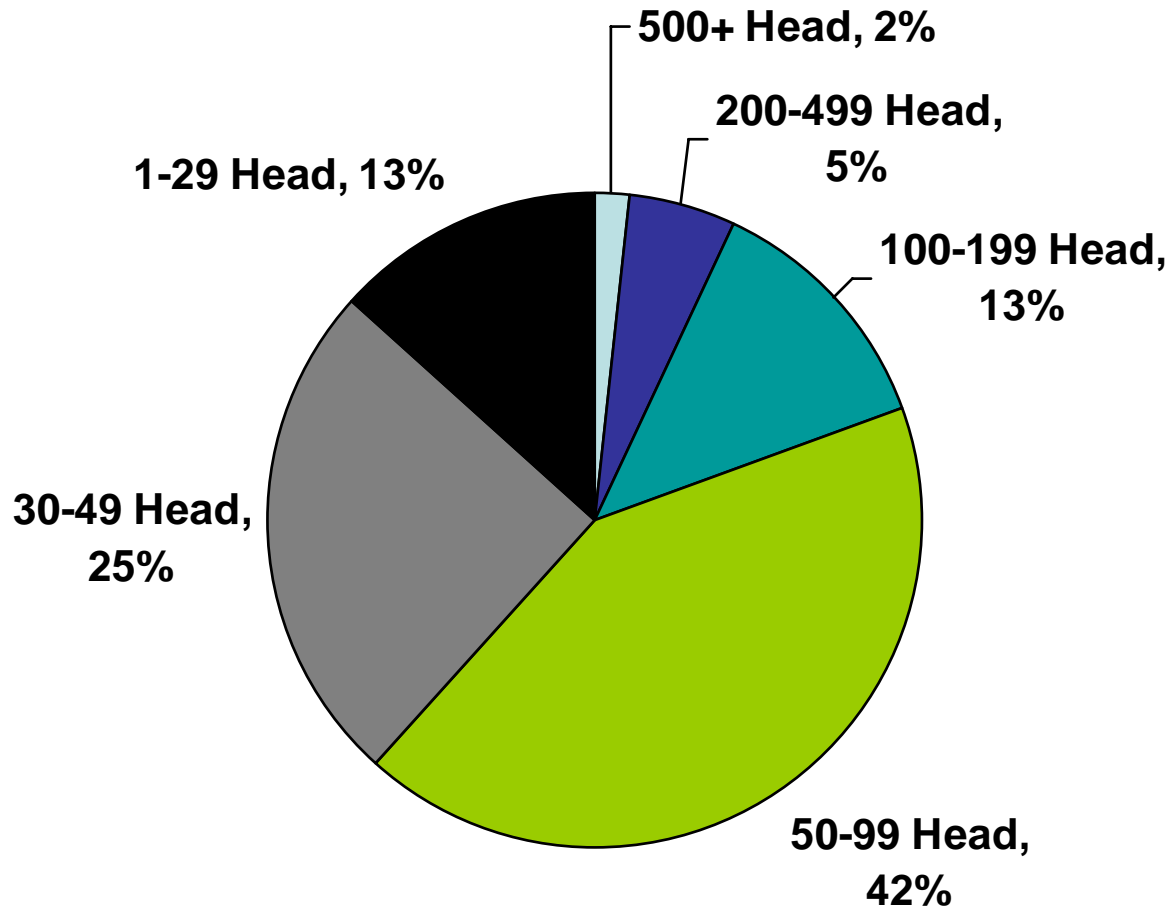
Herd Size	1985	2007	% change
1-29	11,400	1,900	-83%
30-49	16,200	3,600	-78%
50-99	11,600	6,100	-47%
100+	1,800	2,800	+56%
Total	41,000	14,400	-65%

Change in Herd Size Wisconsin, 1995 - 2007

Herd Size	1995	2000	2005	2007
1-49	15,700	9,900	6,100	5,500
50-99	9,900	8,300	6,400	6,100
100-199	2,100	2,000	1,850	1,800
200-499	300	660	750	750
500+	1/	140	200	250

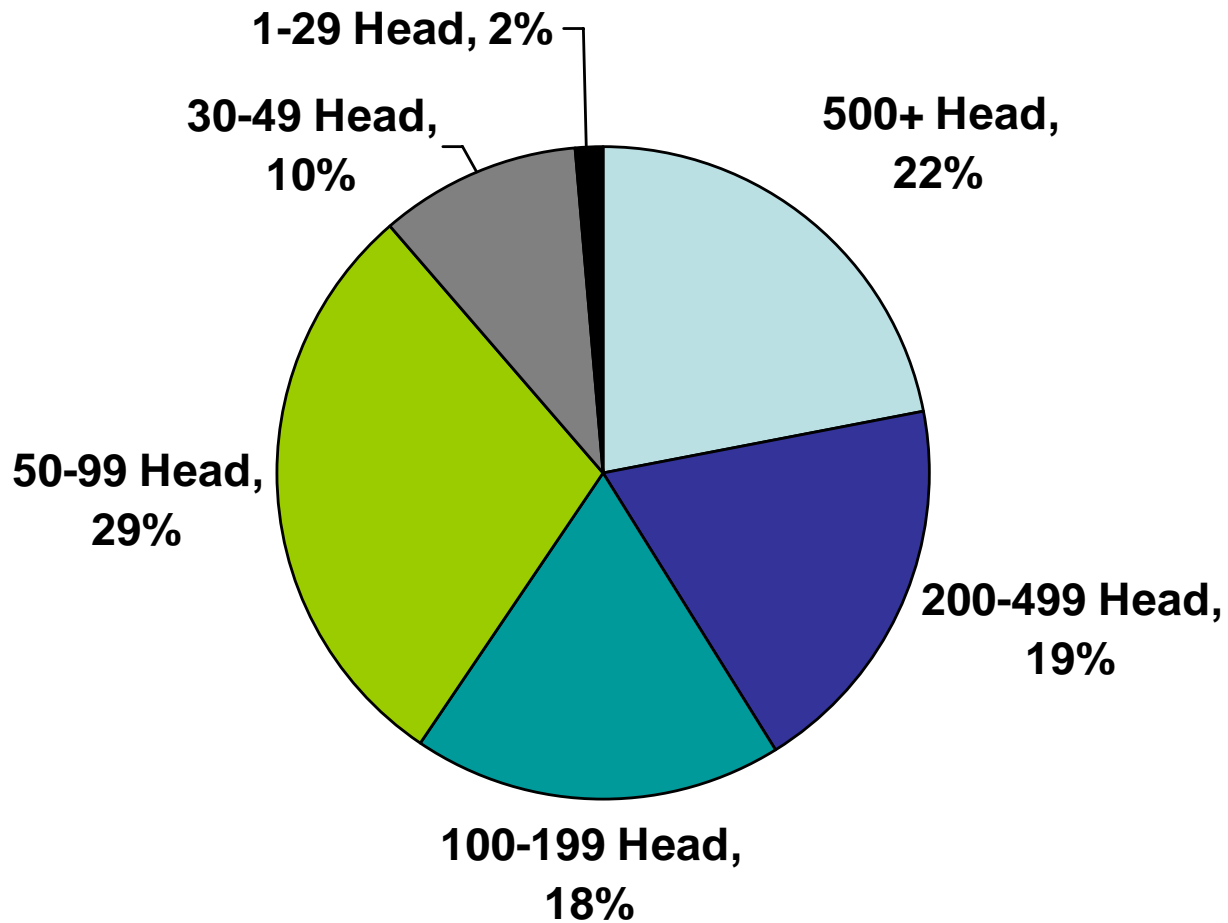
1/ Included with 200-499 cows

Percent of Dairy Operations by Herd Size Wisconsin, 2007



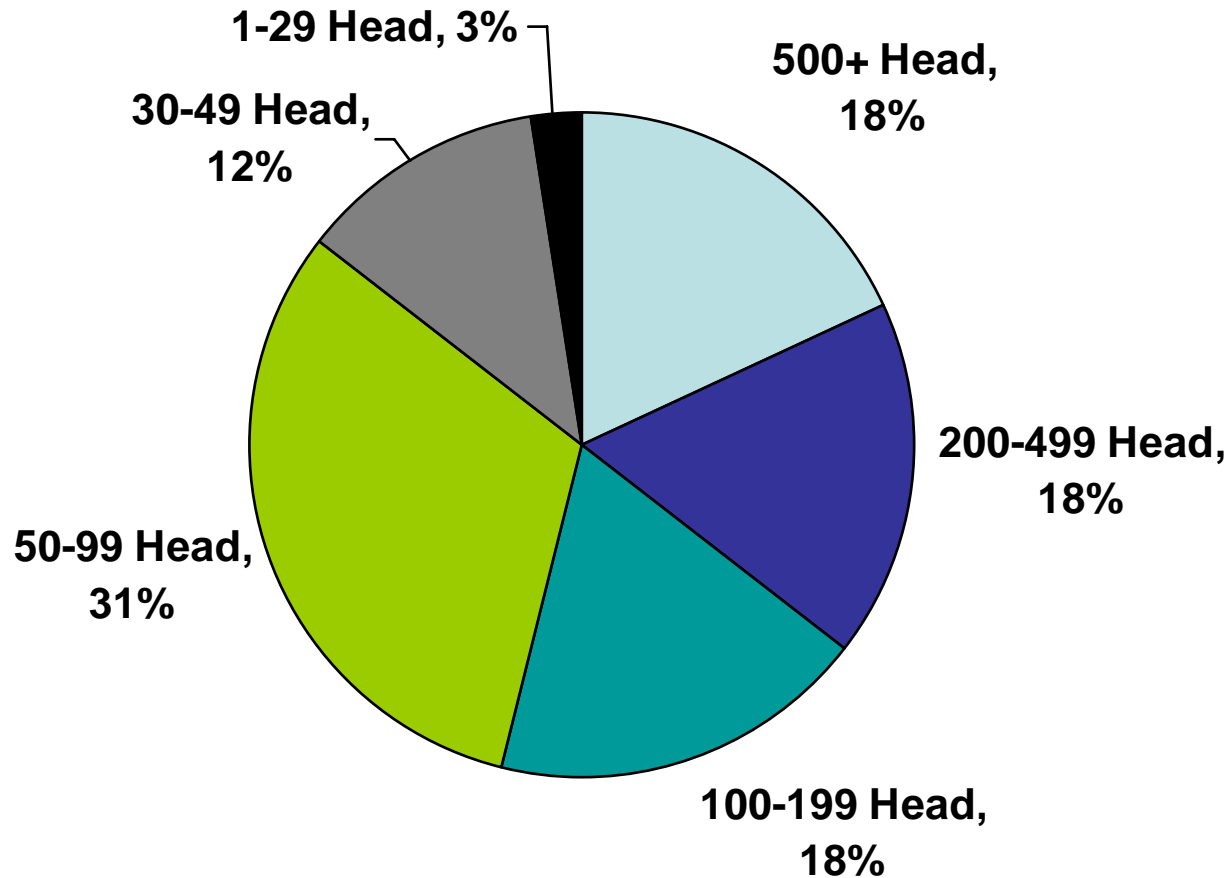
2007 – 14,400 Dairy Operations

Percent of Milk Production by Herd Size Wisconsin, 2007



2007 – 24.1 Billion Pounds Milk Production

Percent of Dairy Cows by Herd Size Wisconsin, 2007



2007 - 1.25 Million Dairy Cows

Dairy Opinion Survey, 2007

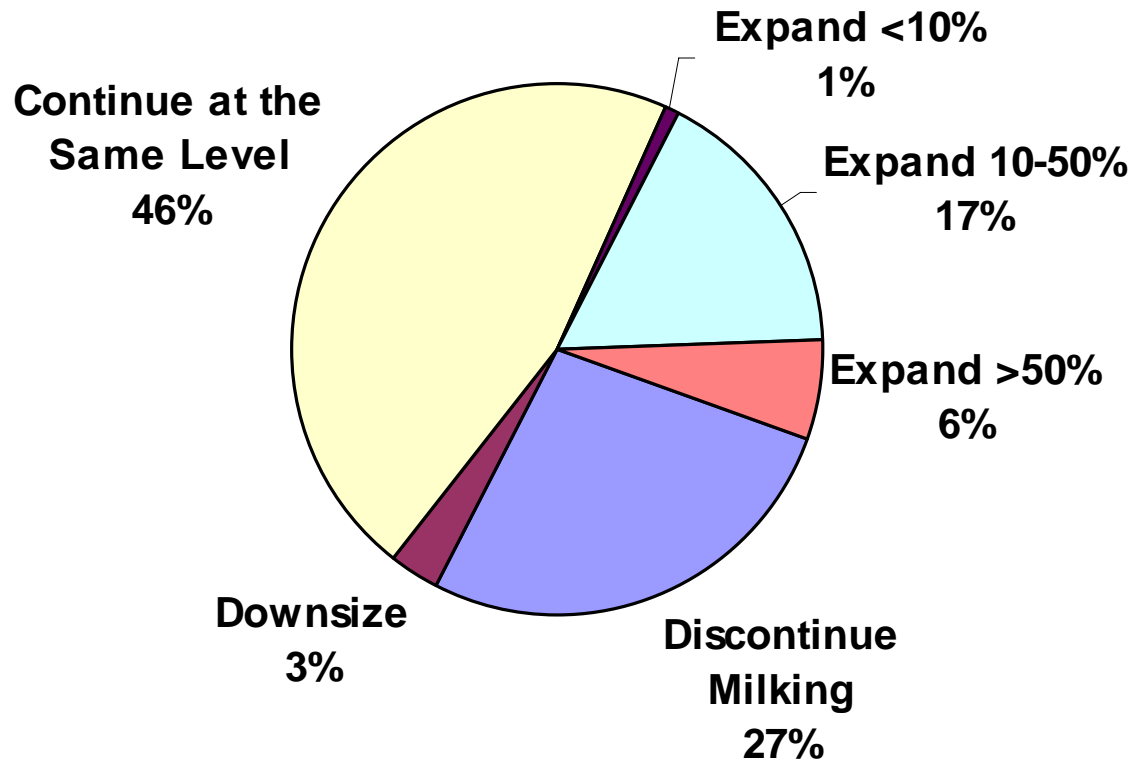
- Surveys sent to Wisconsin milk producers in April and May 2007
- 3000 dairy farmers sampled, stratified by herd sizes
- 45% of those surveyed responded

Future Plans, by Herd Size

Herd size	Plans for next five years					
	Dis-continue milking	Downsize	Continue at the same level	Increase in number of milk cows		
				Less than 10%	10-50%	Greater than 50%
	Percent					
1-29	41	0	44	0	5	10
30-49	32	2	49	0	12	5
50-99	26	5	49	1/	17	3
100-199	15	5	41	6	28	5
200-499	8	2	30	8	32	20
500+	2	2	27	11	31	27
Total	27	3	46	1	17	6

1/ Less than 1 percent.

Dairy Producers' Plans for Next 5 Years, Wisconsin, 2007



Reasons for Discontinuing Milking

- 35% plan on retiring
- 22% plan on shifting to beef, cash crops or other agriculture
- 15% have economic reasons, can't make it financially
- 9% have health issues

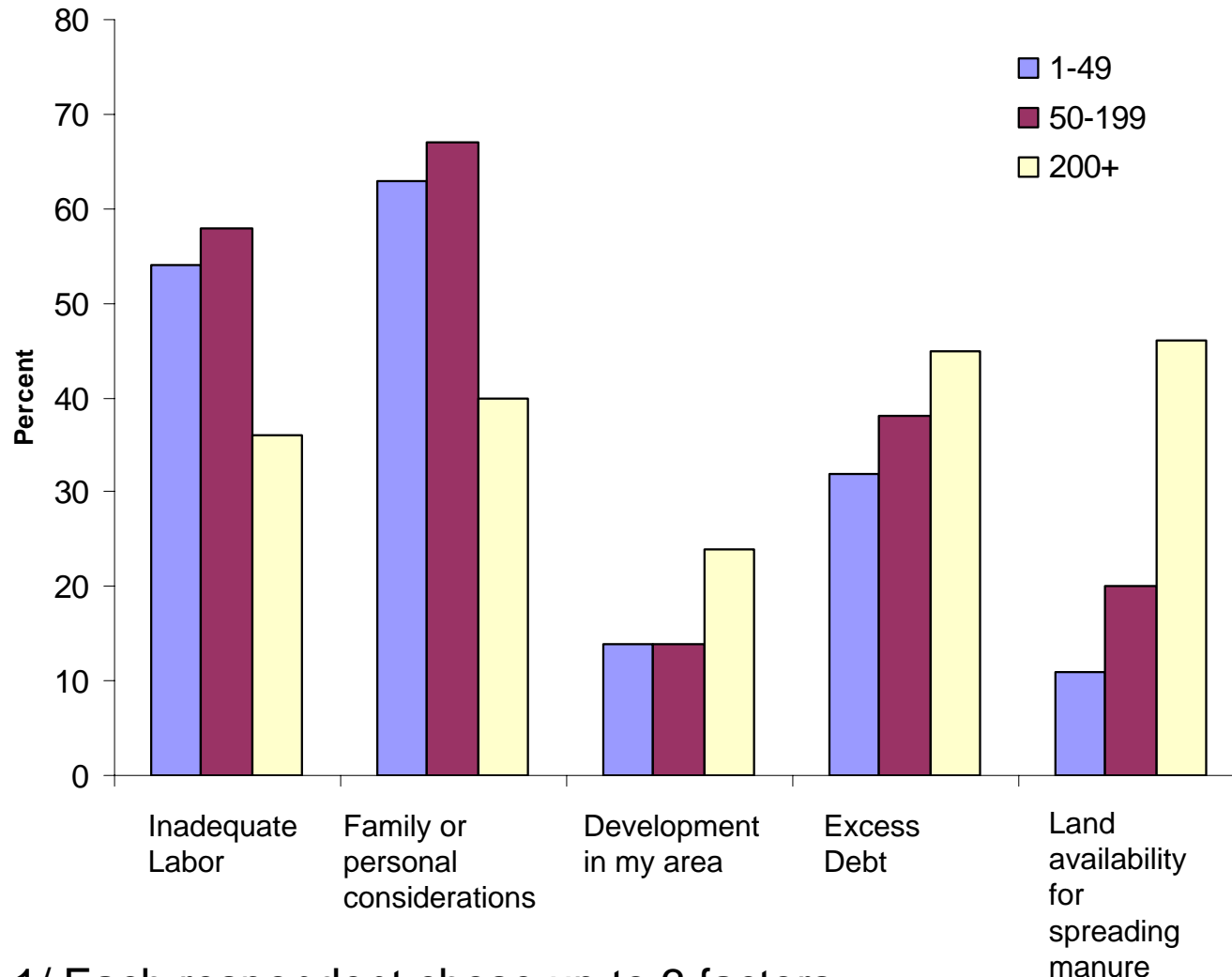
Investments in Wisconsin Dairy Facilities, 2003-2007, by Herd Size

Herd size	Dairy cow housing	Feed handling/storage	Milking system	Manure handling/storage	Total
	1,000 Dollars				
1-29	6,500	4,210	2,090	2,410	15,210
30-49	13,740	20,735	14,815	13,580	62,870
50-99	86,305	44,890	31,395	31,210	193,800
100-199	119,275	30,585	48,085	26,080	224,025
200-499	125,795	25,435	43,320	25,260	219,810
500+	155,645	25,445	36,875	62,695	280,660
Total	507,260	151,300	176,580	161,235	996,375

Expected Investments in Wisconsin Dairy Facilities, 2008-2012, by Herd Size

Herd size	Dairy cow housing	Feed handling/storage	Milking system	Manure handling/storage	Total
	1,000 Dollars				
1-29	2,205	1,625	1,225	1,370	6,425
30-49	30,385	8,555	4,955	6,685	50,580
50-99	64,795	26,420	29,535	26,950	147,700
100-199	70,985	30,160	38,085	34,305	173,535
200-499	178,400	28,775	55,250	66,025	328,450
500+	198,340	27,680	52,395	86,500	364,915
Total	545,110	123,215	181,445	221,835	1,071,605

Limiting Factors of the Future of Dairy Operations, by Herd Size 1/



1/ Each respondent chose up to 3 factors.