

Stakeholder Preliminary Input Meeting – Chapter NR 811 Rule Revisions

Subchapter IV – Pumping Stations, Pumphouses, and Water Treatment Plant Buildings

Subchapter V – Pumping Equipment and Appurtenances

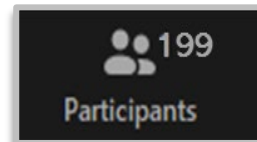
(s. NR 811.24 - 811.37, Wis. Adm. Code)

Hearing Logistics (Zoom)

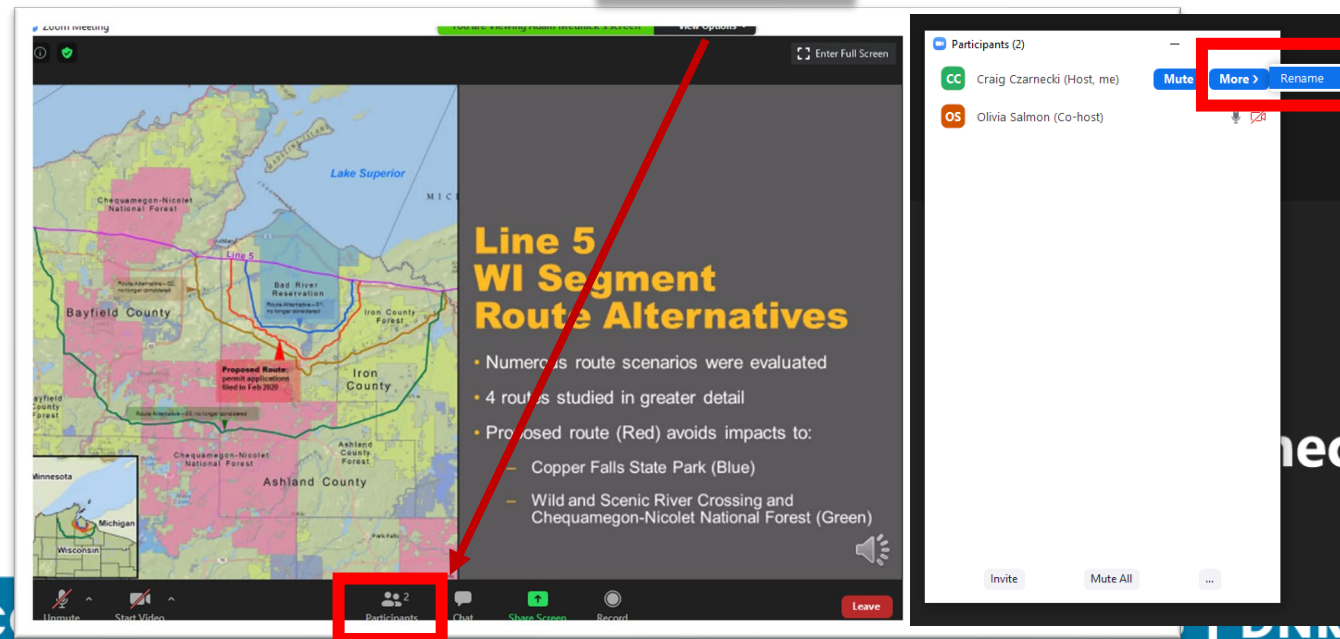
Update your Participant name to include your full name:

1. Click Participants
2. Click your name. Click More>Rename to update.

(1.)



(2.) Click Name > More > Rename to include your full name.



Hearing Logistics (Zoom)

If you would like to submit a verbal comment:

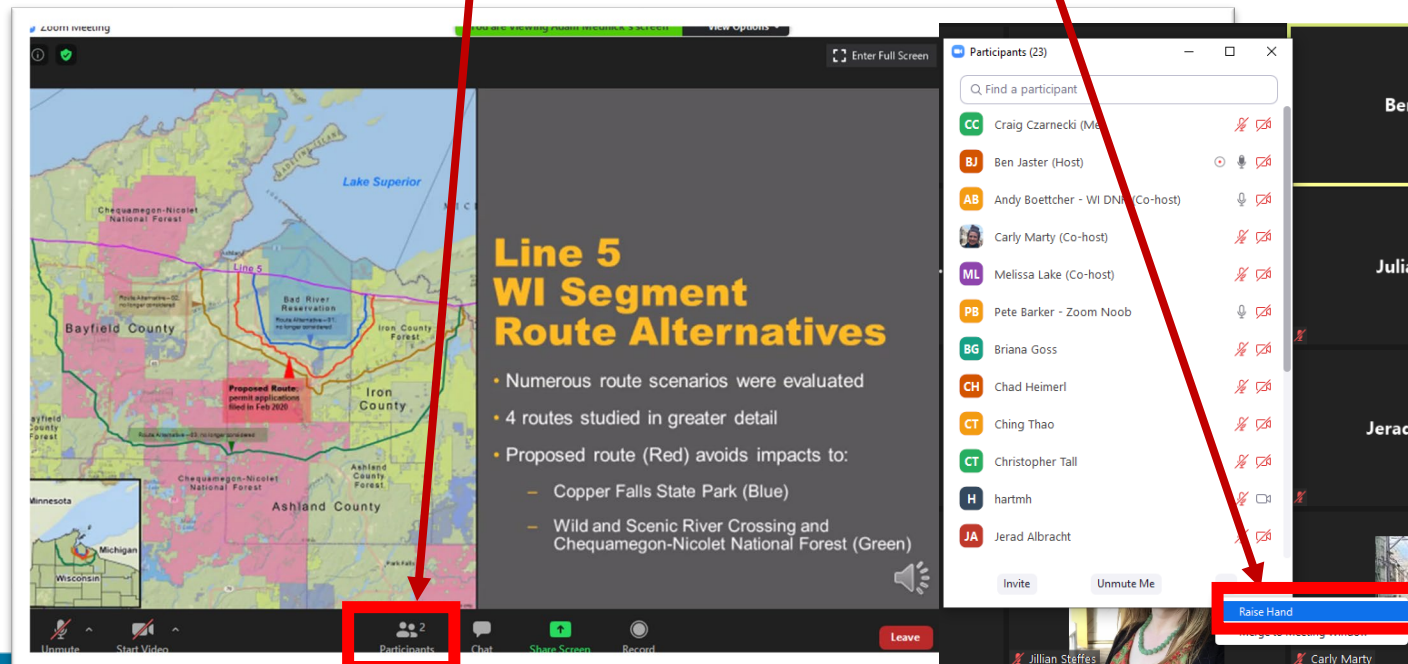
1. Click “Participants”

2. Click “Raise Hand”

(1.)

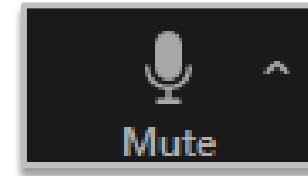
(2.)

Raise Hand



Hearing Logistics (Zoom)

3. When your name is called, the *Meeting Host* will unmute you

A screenshot of a Zoom meeting interface. The main content area displays a map of Wisconsin with various colored regions and a red line indicating a proposed route. To the right of the map, there is a text overlay titled "Line 5 WI Segment Route Alternatives" with a bulleted list of information. The bottom of the screen shows the Zoom control bar with icons for Unmute, Start Video, Participants, Chat, Share Screen, Record, and Leave. A red box highlights the Unmute button. On the right side, a list of participants is visible, with the host's name "Nat Resources (Host)" highlighted in green. A red arrow points from the "Mute" button at the top right to the Unmute button in the Zoom control bar.

Line 5 WI Segment Route Alternatives

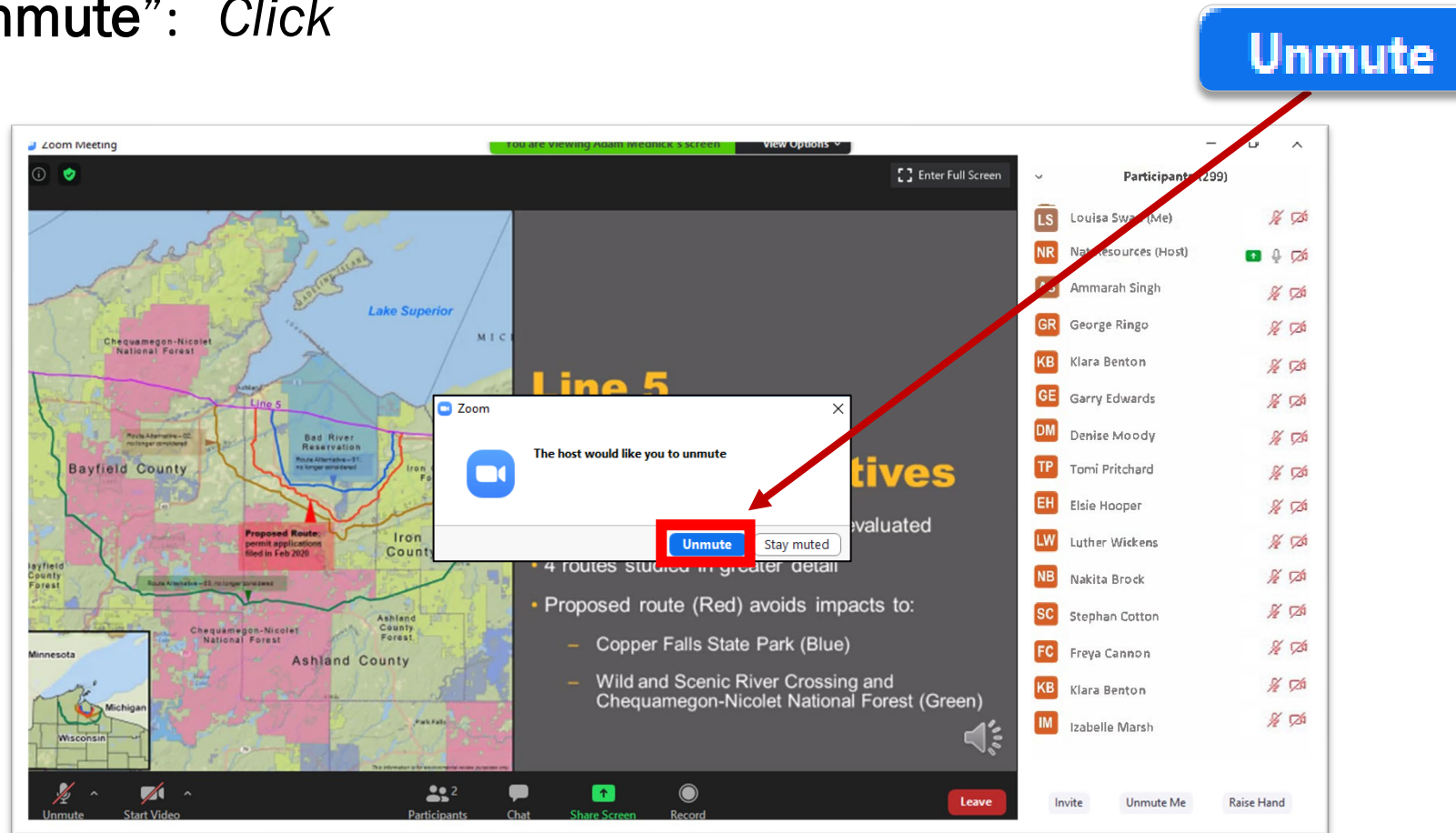
- Numerous route scenarios were evaluated
- 4 routes studied in greater detail
- Proposed route (Red) avoids impacts to:
 - Copper Falls State Park (Blue)
 - Wild and Scenic River Crossing and Chequamegon-Nicolet National Forest (Green)

Participants (299)

Initials	Name	Mute Status
LS	Louisa Swan (Me)	Muted
NR	Nat Resources (Host)	Unmuted
AS	Ammarah Singh	Muted
GR	George Ringo	Muted
KB	Klara Benton	Muted
GE	Garry Edwards	Muted
DM	Denise Moody	Muted
TP	Tomi Pritchard	Muted
EH	Elsie Hooper	Muted
LW	Luther Wickens	Muted
NB	Nakita Brock	Muted
SC	Stephan Cotton	Muted
FC	Freya Cannon	Muted
KB	Klara Benton	Muted
IM	Izabelle Marsh	Muted

Hearing Logistics (Zoom)

4. You should receive a pop-up “The host would like you to unmute”: *Click*



Hearing Logistics (Zoom)

5. When you've finished speaking, the Host will re-mute you



The screenshot shows a Zoom meeting interface. The main content area displays a map of Wisconsin with several route alternatives highlighted in different colors (red, blue, green, orange). A red arrow points from the "Unmute" button in the bottom toolbar to the "Unmute" button in the top right corner. The participant list on the right shows 299 participants, with the host "Nat Resources" and several other participants listed.

Line 5 WI Segment Route Alternatives

- Numerous route scenarios were evaluated
- 4 routes studied in greater detail
- Proposed route (Red) avoids impacts to:
 - Copper Falls State Park (Blue)
 - Wild and Scenic River Crossing and Chequamegon-Nicolet National Forest (Green)

Participant	Mute Status
LS Louisa Swan (Me)	Muted
NR Nat Resources (Host)	Unmuted
AS Ammarah Singh	Muted
GR George Ringo	Muted
KB Klara Benton	Muted
GE Garry Edwards	Muted
DM Denise Moody	Muted
TP Tomi Pritchard	Muted
EH Elsie Hooper	Muted
LW Luther Wickens	Muted
NB Nakita Brock	Muted
SC Stephan Cotton	Muted
FC Freya Cannon	Muted
KB Klara Benton	Muted
IM Isabelle Marsh	Muted

NR 811 Applicability

- Applies to new community water systems and improvements, extensions, or alterations to existing community water systems
- Chapter NR 108, Wis. Adm. Code, requires submission of plans and specifications to the department for reviewable projects
- Covers source water, pumping facilities, treatment, storage, and distribution

TODAY'S TOPIC: Subchapter IV – Pumping Stations, Pumphouses, and Water Treatment Plant Buildings & Subchapter V – Pumping Equipment and Appurtenances

Subchapter IV

Pumping Stations, Pumphouses, and Water Treatment Plant Buildings

Topic Areas for Input or Suggestions

- 1) Water system building design and construction requirements (s. *NR 811.24 – 811.25, Wis. Adm. Code*)
- 2) Pumping units and capacity requirements (s. *NR 811.26, Wis. Adm. Code*)

Department Identified Areas in Need of Revision

- 1) Water system building design and construction requirements
 - Clarify that building floor drains may not discharge to storm sewers (s. NR 811.25(1)(h), Wis. Adm. Code)
- 2) Pumping units and capacity requirements
 - None

Topic Areas for Input or Suggestions (Cont.)

- 3) Auxiliary power requirements (*s. NR 811.27, Wis. Adm. Code*)
- 4) Additional requirements (*s. NR 811.28, Wis. Adm. Code*)

Department Identified Areas in Need of Revision (Cont.)

3) Auxiliary power requirements

- Eliminate maximum distance requirement for portable auxiliary power sources (s. NR 811.27(1)(c), Wis. Adm. Code)

4) Additional Requirements

- Require all piping in contact with potable water is ANSI/NSF Std. 61 certified (s. NR 811.28(5)(b), Wis. Adm. Code)
- Consider uses of schedule 80 PVC pipe for above grade discharge piping (s. NR 811.28(5)(b), Wis. Adm. Code)

Subchapter V

Pumping Equipment and Appurtenances

Topic Areas for Input or Suggestions

1. Pumping capacity requirements (s. NR 811.29, Wis. Adm. Code)
2. General pump, motor, and wiring installation requirements (s. NR 811.30, Wis. Adm. Code)
3. Vertical turbine and submersible pump installation requirements (s. NR 811.31 – 811.33, Wis. Adm. Code)

Department Identified Areas in Need of Revision

1. Pumping capacity requirements
 - Allow a minimum capacity of 1 gpm per living unit for small community water systems (s. NR 811.29, Wis. Adm. Code)
2. General pump, motor, and wiring installation requirements
 - None
3. Vertical turbine and submersible pump installation requirements
 - Add column pipe requirements for vertical turbine pumps similar to submersible pumps (s. NR 811.31, Wis. Adm. Code)
 - Require metering and controls for vertical turbine pump prelubrication lines (s. NR 811.32(2)(b), Wis. Adm. Code)

Topic Areas for Input or Suggestions

4. Pump variable output control devices installation requirements (s. NR 811.34, Wis. Adm. Code)
5. Pitless unit installation requirements (s. NR 811.35, Wis. Adm. Code)

Department Identified Areas in Need of Revision (Cont.)

4. Pump variable output control devices installation requirements
 - Remove protections for variable frequency drive (VFD) units which are no longer enforced (s. NR 811.34, Wis. Adm. Code)
 - Clarify VFD unit programming requirements to ensure circulation of storage vessels (s. NR 811.34(6)(e), Wis. Adm. Code)
5. Pitless unit installation requirements
 - Clarify the reasoning for check valve location requirements (s. NR 811.35(6), Wis. Adm. Code)

Topic Areas for Input or Suggestions

6. Well appurtenances and pump base construction requirements (s. NR 811.36, Wis. Adm. Code)
7. Pump discharge piping and appurtenances requirements (s. NR 811.37, Wis. Adm. Code)

Department Identified Areas in Need of Revision (Cont.)

6. Well appurtenances and pump base construction requirements
 - Clarify well vent code requirements for new pump bases and existing pump bases (s. NR 811.36(1)(a), Wis. Adm. Code)
7. Pump discharge piping and appurtenances requirements
 - Clarify code requirements for buried suction lines (s. NR 811.37(1), Wis. Adm. Code)
 - Clarify air-vacuum relief valve applicability and discharge piping material requirements (s. NR 811.37(5)(a), Wis. Adm. Code)

Department Identified Areas in Need of Revision (Cont.)

7. Pump discharge piping and appurtenances requirements (cont.)
 - Require a water service lateral in situations where it is necessary to obtain a representative finished water quality sample (s. NR 811.37(5)(b), Wis. Adm. Code)
 - Clarify chemical injection tap requirements for OTM water systems (s. NR 811.37(5)(g), Wis. Adm. Code)

CONNECT WITH US

McCrea Baker

(608) 279-8426

McCrea.Baker@wisconsin.gov

Ken Scherer

(715) 520-3981

Kenneth.Scherer@wisconsin.gov



/WIDNR



@WIDNR



@WI_DNR



/WIDNRTV



"WILD WISCONSIN:
OFF THE RECORD"