

# Washington County and incorporated areas Flood Storage Districts

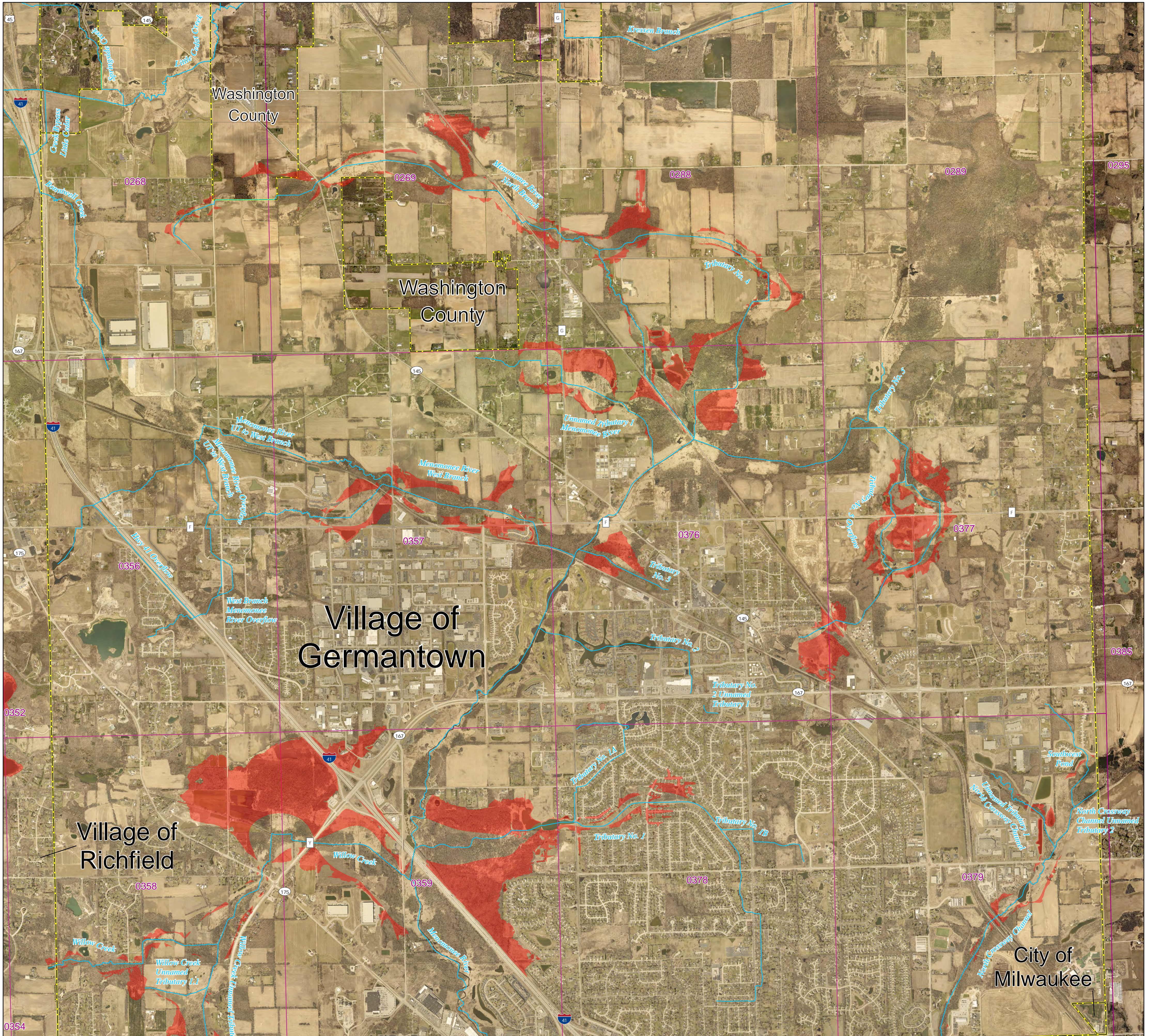
Sources of Study: WDNR

Effective Date: TBD

Approved by: WDNR

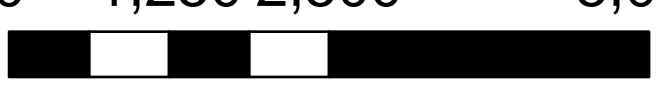
T9N R20E

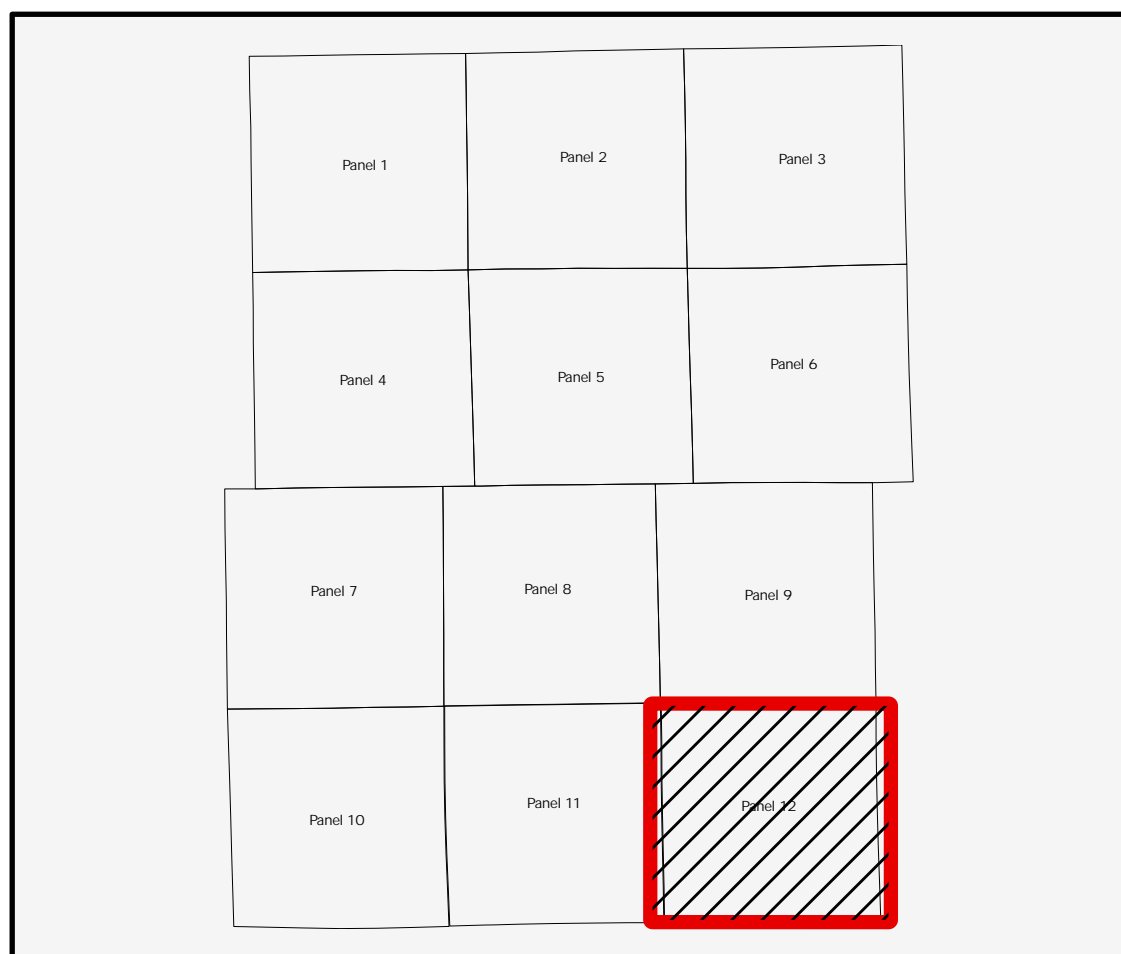
Panel 12



## LEGEND

- Flood Storage Districts
- Rivers/streams
- FIRM Panel
- POLITICAL AREAS**
- Municipalities
- Washington County

0 1,250 2,500 5,000 Feet  
  
 1:18,000



Coordinate System: NAD 1983 HARN UTM Zone 16

Aerial photography was acquired in the Spring of 2022 and was provided in digital format by Washington County.

Flood Storage Districts are available for viewing after the Letter of Final Determination (LFD) date at DNR's Surface Water Data Viewer: [dnr.wisconsin.gov/topic/SurfaceWater/swdv](https://dnr.wisconsin.gov/topic/SurfaceWater/swdv) (or go to [dnr.wi.gov](https://dnr.wi.gov) and search "SWDV")

