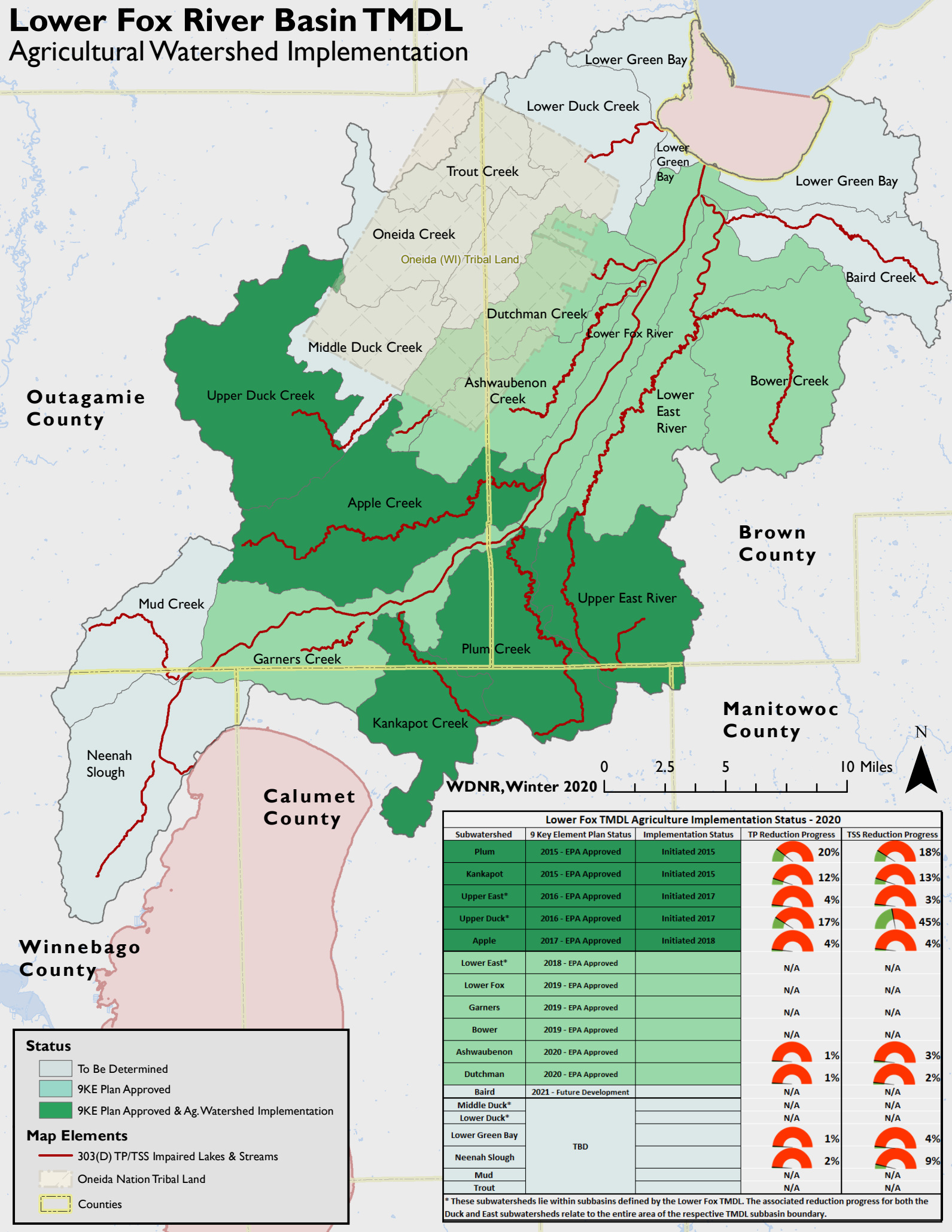


Lower Fox River Basin TMDL Agricultural Watershed Implementation



Status

- To Be Determined
- 9KE Plan Approved
- 9KE Plan Approved & Ag. Watershed Implementation

Map Elements

- 303(D) TP/TSS Impaired Lakes & Streams
- Oneida Nation Tribal Land
- Counties

Lower Fox TMDL Agriculture Implementation Status - 2020					
Subwatershed	9 Key Element Plan Status	Implementation Status	TP Reduction Progress	TSS Reduction Progress	
Plum	2015 - EPA Approved	Initiated 2015	20%	18%	
Kankapot	2015 - EPA Approved	Initiated 2015	12%	13%	
Upper East*	2016 - EPA Approved	Initiated 2017	4%	3%	
Upper Duck*	2016 - EPA Approved	Initiated 2017	17%	45%	
Apple	2017 - EPA Approved	Initiated 2018	4%	4%	
Lower East*	2018 - EPA Approved		N/A	N/A	
Lower Fox	2019 - EPA Approved		N/A	N/A	
Garners	2019 - EPA Approved		N/A	N/A	
Bower	2019 - EPA Approved		N/A	N/A	
Ashwaubenon	2020 - EPA Approved		1%	3%	
Dutchman	2020 - EPA Approved		1%	2%	
Baird	2021 - Future Development		N/A	N/A	
Middle Duck*	TBD		N/A	N/A	
Lower Duck*			N/A	N/A	
Lower Green Bay			1%	4%	
Neenah Slough			2%	9%	
Mud			N/A	N/A	
Trout			N/A	N/A	

* These subwatersheds lie within subbasins defined by the Lower Fox TMDL. The associated reduction progress for both the Duck and East subwatersheds relate to the entire area of the respective TMDL subbasin boundary.